

SmartPropoPlus Interface to PPJoy

Alpha version 3.0.0

Introduction

You can now use your R/C Transmitter as a general-purpose joystick. Connect it to the computer's soundcard, install PPJoy and SmartPropoPlus Extension for PPJoy – and you can use **any** simulator that is controlled by a joystick, including FMS.

Installation

Connecting an R/C Transmitter:

- Turn off your R/C Transmitter.
- Connect your R/C Transmitter to the PC's sound card with an appropriate cable as indicated in the SmartPropoPlus home.
- Connect one side of the cable to the R/C Transmitter buddy socket and then connect the other side of the cable to the Line-in (or the Microphone) socket of the soundcard. These sockets are usually color-coded as in the following example:



Note: Most sound cards feature only some of the above sockets.

- Turn on your R/C Transmitter. You may hear a loud noise coming from your speakers. This is a normal behavior of the system. The noise will be muted once you have configured SmartPropoPlus through its console.

SmartPropoPlus Extension for PPJoy

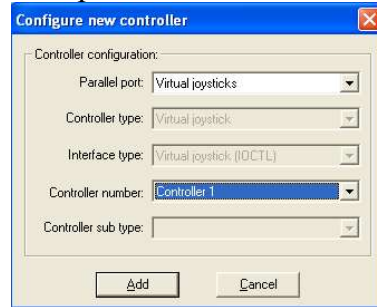
- Create a SmartPropoPlus folder anywhere you like.
- Unzip the SmartPropoPlus Extension files into this folder.
- Create a shortcut to file *SppConsole.exe* and place the shortcut on the desktop.

PPJoy

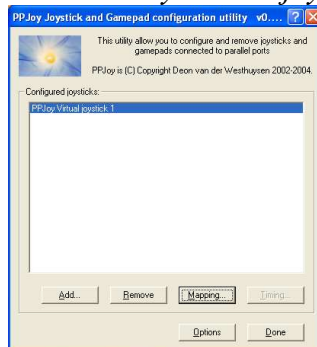
Install PPJoy according to the excellent documentation it comes with.
Now configure a Virtual Joystick.

1. Start the configuration utility.
2. Click the *Add* button.
3. In the Configure new controller select as follows:
 - a. Parallel Port: Virtual Joysticks
 - b. Controller Number: Controller 1
 - c. Click the *Add* button.

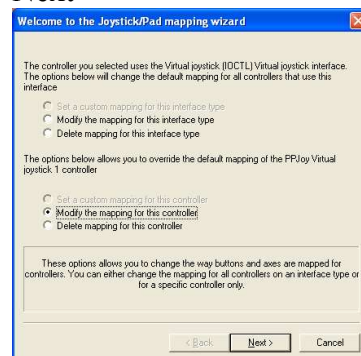
Example:



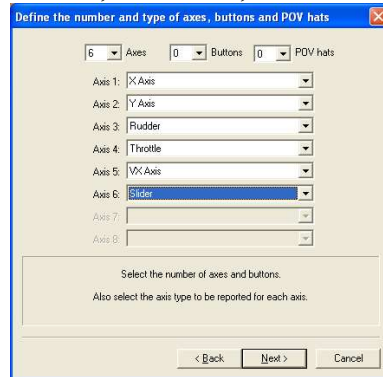
4. Complete the installation of PPJoy according to the PPJoy documentation.
5. Select *PPJoy Virtual joystick 1* and click button *Mapping*.



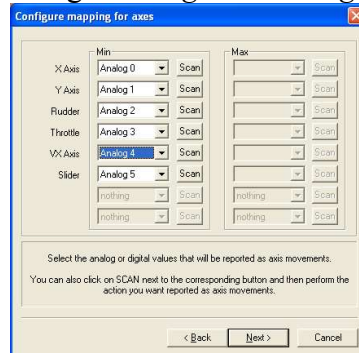
6. Mapping
 - a. Next



b. 6 Axes, 0 Buttons, 0 POV and assign all axes. Then Next.



c. Assign Analog 0 to Analog 5. Next

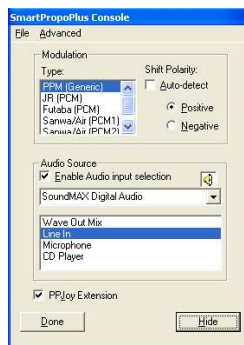


d. Continue until end of configuration.

Usage

Connect your R/C Transmitter to the soundcard and turn it on. Now start the *SmartPropoPlus Console* by double-clicking the shortcut to file *SppConsole.exe*. Select the correct modulation type and *audio source*. Check the *PPJoy Extension* check box and click on the *Hide* Button.

Example:



From this point, PPJoy receives the joystick information from the R/C Transmitter. You may need to calibrate and map the axes by using the Windows *Games Controller* application (Located in the Control Panel).

Acknowledgements & References

PPJoy is a joystick device driver, created by *Deon van der Westhuysen* for Windows 2000 and later. There is also limited support for Windows 98 and Windows Me. PPJoy was designed for joysticks connected to the parallel port but it also supports other devices via the [virtual joystick interface](#)

Deon has added in version 0.75 the ability of PPJoy to accept input via IOCTL calls – an excellent and simple programming interface – along with a programming example.

SmartPropoPlus is based on **SmartPropo** by *Tsutomu Seki*.

PPJoy Home: <http://www.geocities.com/deonvdw/PPJoyDownload.htm>

SmartPropoPlus Home: http://www.geocities.com/shaul_ei/SmartPropoPlus.html

SmartPropo Home: <http://www.sekiriki.jp>

Deon van der Westhuysen: ppjoy@inbox.lv